

Waterproof Camera Housing

for board-level cameras and USB cameras

IP67



A compact camera housing for small board cameras and USB cameras

This is a small, compact waterproof camera housing.

It can accommodate camera modules such as board cameras and USB cameras, enabling installation in outdoor environments or industrial facilities where exposure to splashes may occur.

Camera Housing 80: size 80 x 80 x 60mm [More Info ▶](#)

Camera Housing 100: size 100 x 100 x 75mm [More Info ▶](#)

Manufacturer-specific Sets



In addition to the standalone camera housing, we also offer manufacturer-specific sets compatible with cameras from various camera brands.

The set is an all-in-one package that includes the housing case, camera mounting plate, internal cables, and external cables, allowing the camera to be installed and used immediately.

Example of set contents:

Camera housing

Dome window and flat window for the housing

Camera mounting parts (mounting plate and spacers)

CSI conversion module (HDMI or Ethernet)

Cable with cable gland

Vent filter seal

*The set contents vary depending on the type of camera.

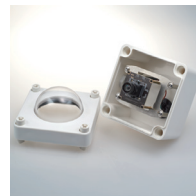


for Raspberry Pi Cameras

This set is compatible with Raspberry Pi cameras such as V2, V3, AI, and HQ models.

By using an HDMI or Ethernet conversion module, the cable can be extended for flexible installation.

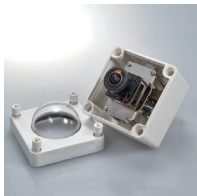
[More Info ▶](#)



for ELP Cameras

This set is designed to accommodate ELP board cameras and USB cameras.

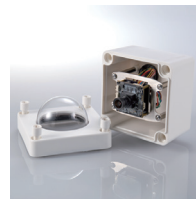
[More Info ▶](#)



for Arducam Cameras

This set is designed to accommodate Arducam board cameras and USB cameras.

[More Info ▶](#)



for SMTSEC Cameras

This set is designed to accommodate SMTSEC board cameras and IP cameras.

[More Info ▶](#)

Cameras from manufacturers other than those listed above can also be integrated. We can also design and manufacture custom mounting plates and related components. Please feel free to contact us for consultation.

Accessories

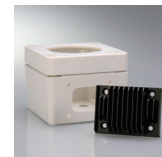


[Mounting Bracket ▶](#)
[Roof ▶](#)

[Two axis bracket ▶](#)

[Upward Bracket ▶](#)

[Wall/Pole bracket ▶](#)



Heatsink

A heat sink system designed to resolve thermal issues when integrating high-power cameras.

Cables & Connectors



Waterproof Cables / Connectors

[USB Type-C ▶](#)

[USB Type-A ▶](#)

[HDMI ▶](#)

[RJ45 / Ethernet ▶](#)

[M12/A-Coded ▶](#)



Internal cables

[Super Short Cables \(USB/ HDMI /Ethernet\) ▶](#)

[Flat Cables \(USB Micro-B-USB Type-C /USB Micro-B-USB Type-A\) ▶](#)

[Waterproof Connector Cable RJ45 ▶](#)

[Waterproof Connector Cable M12/A-Coded ▶](#)

[Waterproof Connector Cable USB Type-A ▶](#)

[Waterproof Connector Cable USB Type-C ▶](#)