

Honeycomb Case for Raspberry Pi



A case featuring a honeycomb structure for reduced weight and improved rigidity

A honeycomb-structure case designed for lightweight strength and airflow. Supports heat dissipation and is suitable for Raspberry Pi boards and peripherals. Customizable with optional accessories for cooling and mounting.

[Product page](#) ▶

Cooling System



Heat Pipe with Fin (for Raspberry Pi 5)

This finned heat pipe transfers heat from the source and dissipates it through an expanded fin surface area. It supports passive cooling and can be combined with auxiliary fans if required.

[Product page](#) ▶



Heat Pipe (for Raspberry Pi 4/5)

This heat pipe provides passive cooling for Raspberry Pi without consuming power or generating noise.

[for Raspberry Pi 4](#) ▶

[for Raspberry Pi 5](#) ▶



Cooling Fan (for Raspberry Pi 4/5)

[for Raspberry Pi 4](#) ▶

[for Raspberry Pi 5](#) ▶



Frame-mounted Cooling Fan

A cooling fan designed for frame mounting. When used in combination with a heat pipe, it enhances heat dissipation and provides more effective cooling.

[Product page](#) ▶

Accessories



Magnetic Mount Bracket

A bracket designed to secure a honeycomb case using magnets. Allows mounting on metal surfaces for easy installation and repositioning.

[Product page](#) ▶



DIN Rail Mount Bracket

A bracket designed to secure a honeycomb case using a DIN rail. Suitable for installation in control panels and other DIN rail-based environments.

[Product page](#) ▶

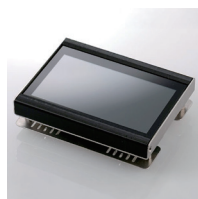
Display Mount Frame



Adjustable Display + Frame

An adjustable frame that allows a 4.3-inch display to be mounted on the side of a honeycomb case. The display angle can be adjusted to suit the installation environment.

[Product page](#) ▶



Display Mount Bracket

A bracket compatible with both magnetic mounting and DIN rail installation.



Display Cable

A cable for connecting a display to the device. Suitable for internal wiring and compact installations around frames or enclosures.

[Product page](#) ▶