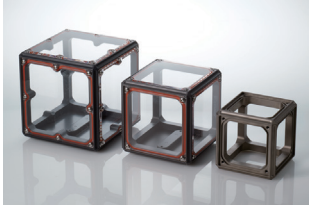


Waterproof Cube Case

CC150: 150 x 150 x 150mm

CC125: 125 x 125 x 125mm

IP68

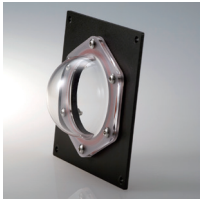


A new modular waterproof case designed to adapt to your application

This cube-shaped waterproof case features a modular design with interchangeable panels on all six sides, allowing flexible customization for different applications and installation environments. It enables functional changes—such as adding cameras or connectors—while maintaining full waterproof performance.

[Product page](#) ▶

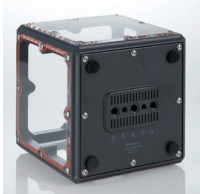
Custom Panel



Dome Panel

Dome / Window Panel for Camera and Instrument Installation.

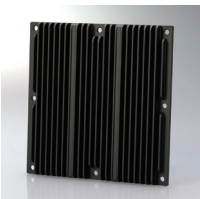
[Product page](#) ▶



Bottom Panel

Bottom panel with mounting screw holes.

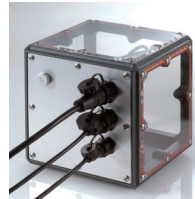
[Product page](#) ▶



Heatsink Panel

Twice the surface area of a standard aluminum panel for enhanced heat dissipation.

[Product page](#) ▶



Connector Panel

Connector panel for external connections from inside the case.

[Product page](#) ▶



Wire Panel

A wire can be attached to the panel to prevent dropping or loss.

[Product page](#) ▶

Other

[Aluminum Panel](#) ▶

[Acrylic Panel](#) ▶

Custom Panel for Raspberry Pi



Heat Pipe Panel

Integrated mounting base and heat pipe panel for Raspberry Pi 4/5, designed to resolve internal heat issues in the cube case.

[Product page](#) ▶

Other

[Connector panel with pedestal](#) ▶

[Raspberry Pi Mounting Panel](#) ▶

[Expansion panel](#) ▶

Accessories & Related Equipment



Mounting Bracket

[Bracket for Cube Case](#) ▶

[2 axis bracket for Cube Case](#) ▶

[304 Series Mounting Brackets](#) ▶

Cables & Connectors



Waterproof Cables / Connectors

[USB Type-C](#) ▶

[USB Type-A](#) ▶

[HDMI](#) ▶

[RJ45 / Ethernet](#) ▶

[M12/A-Coded](#) ▶

Internal cables

[Super Short Cables \(USB/ HDMI /Ethernet\)](#) ▶

[Flat Cables \(USB Micro-B-USB Type-C /USB Micro-B-USB Type-A\)](#) ▶

[Waterproof Connector Cable RJ45](#) ▶

[Waterproof Connector Cable M12/A-Coded](#) ▶

[Waterproof Connector Cable USB Type-A](#) ▶

[Waterproof Connector Cable USB Type-C](#) ▶